

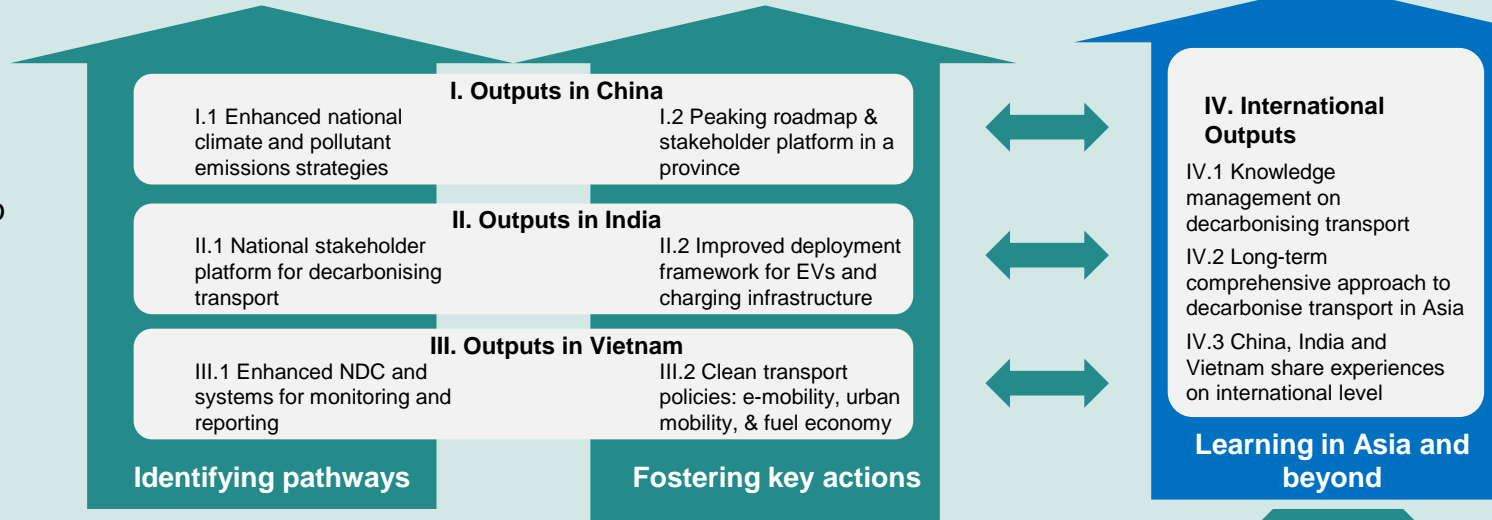


# Nationally Determined Contribution-Transport Initiative for Asia (NDC TIA)

Regional initiative to decarbonize transport

# Outcome: Countries in Asia work on long-term, multi-stakeholder, integrated strategies to decarbonize transport

**Project duration:**  
Nov 2019 to  
Jan 2024



Consistent approach of 7 renowned international organizations in 3+x countries

High visibility in international processes (via SLoCaT REN21, ITF)

**Innovative project character**

Regional agenda setting with strong link to climate agenda

Transfer innovation from Asia to Germany (via Agora)

Full integration with bilateral portfolio and other IKI projects

**Impact:**  
GHG emissions from transport in Asia peak earlier and at a lower level (in line with a well below 2-degree pathway)



# Key areas of work of the India Component

## Overview:

**Coordinator:** GIZ India

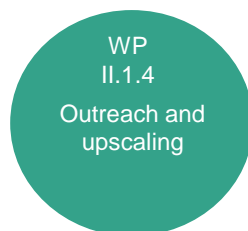
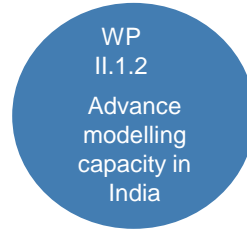
**Consortium of six partners-** WRI, GIZ, ITF, ICCT, Agora, and REN21

**Supporting Partner:** NITI Aayog

**Duration:** 2019 to 2024

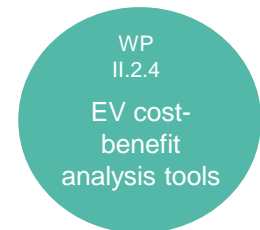
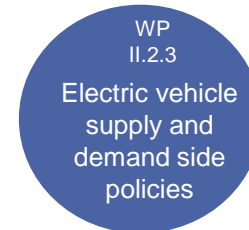
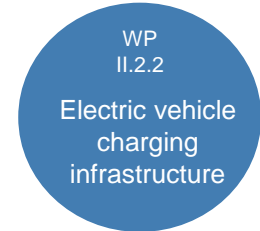
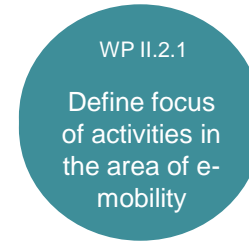
## Output 1

A stakeholder platform has the capacity to formulate pathways on decarbonising transport in India based on technical assistance.



## Output 2

In India, policy and procurement frameworks for EVs and charging infrastructure have been improved.



## Annex- Activities under the Work Packages

WP	Activity	Lead partner	Supporting partner(s)
Support national multi-stakeholder dialogue	Initiate a cross-agency platform, including public stakeholders, the private sector and civil society	WRI	GIZ
	Facilitate international peer learning from other countries and best practice exchange	ITF	Agora, WRI, REN21, GIZ
Advance modelling capacity in India	Review existing models related to transport and CO2 projections; identify modelling and data gaps and propose avenues for further enhancement of transport data collection and of national-level transport models	ITF	ICCT
	Improve capacities for data collection and processing as well as modelling	ITF	REN21, ICCT
Technical support to the stakeholder platform	Provide (short, i.e. max 6 months working time) technical studies to inform stakeholder dialogue	ICCT	WRI, ITF, GIZ
	Exchange with other donors contributing to technical analysis	GIZ	ITF, WRI, ICCT
Outreach and upscaling	Develop an outreach strategy for India	WRI	ITF, GIZ, ICCT
	Dialogue with international finance institutions (e.g. World Bank, ADB, AFD, KFW, AIIB) on financing climate actions in transport	GIZ	ITF, WRI, ICCT, AGORA
	Indian stakeholders contribute to global/Asian best practice exchange	ITF	Agora, WRI, ICCT, GIZ

## Annex- Activities under the Work Packages

WP	Activity	Lead partner	Supporting partner(s)
Define focus of activities in the area of e-mobility	Perform a status quo analysis on different segments in India (e.g. 2-wheeler, cars, trucks, buses)	GIZ	ICCT, WRI
	Define gaps and derive relevant use cases for the proposed activities within the project in close collaboration with different stakeholders, particularly from the private sector	GIZ	ICCT, WRI
Electric vehicle charging infrastructure	Support the development of policies and technical standards to promote charging infrastructure uptake	GIZ	ICCT
Electric vehicle supply and demand side policies	Conduct analysis on EV supply and demand side policies to support relevant stakeholders in developing appropriate policy instruments	WRI	ICCT
EV cost-benefit analysis tools	Identify use cases and associated business models from which to develop analysis tools appropriate for different levels of intervention and contexts	WRI	-
	Identify and engage relevant industry and consumer stakeholders to compile pertinent data	WRI	-
	Produce and validate analysis tools against real-world activities, with stakeholder feedback	WRI	-